

Moon Shot for Equity Monthly Newsletter

September 2021



Best Practice Team Fall Updates

Prioritization Lists

This Fall, teams are engaging in focus groups and a Navigate climate survey to understand Navigate need and prioritize next steps accordingly.

- **Hold Reform teams** are finalizing hold audits and using data to understand holds disproportionately affect certain students. Teams are creating policy recommendations based on findings.
- **Holistic Care teams** are focusing on 1-3 high impact campaigns to engage students in support while building out coordinated care networks.
- **Transfer Pathway teams** are holding student focus groups, website audits and will begin forming faculty learning communities to align academic pathways across institutions.
- **Retention Grants teams** are engaging in HEERF strategy and will monitor effectiveness of grant distribution processes.

Equity Mindedness eConvening Series

As part of the Moon Shot for Equity partnership, Milwaukee Moon Shot institutions are engaged in a monthly racial equity eConvening Series. Each Institution will appoint stakeholder(s) to attend live sessions. This series is hosted by USC Race and Equity Center, for more information on the center, click [here](#).

September's Equity Series Training

Integrating Racial Topics Across the Curriculum

Friday, September 17th 1-4pm CST

Registration links will be sent out to select stakeholders in advance of the session.

Access Equity Infographic Resources

[Taking Action on Student Equity](#)
21 Strategies to Advance Underserved and Nontraditional Student Success

[Support Equity in Student Success with Navigate](#)
How to Leverage the Platform to Support Your Equity Strategy

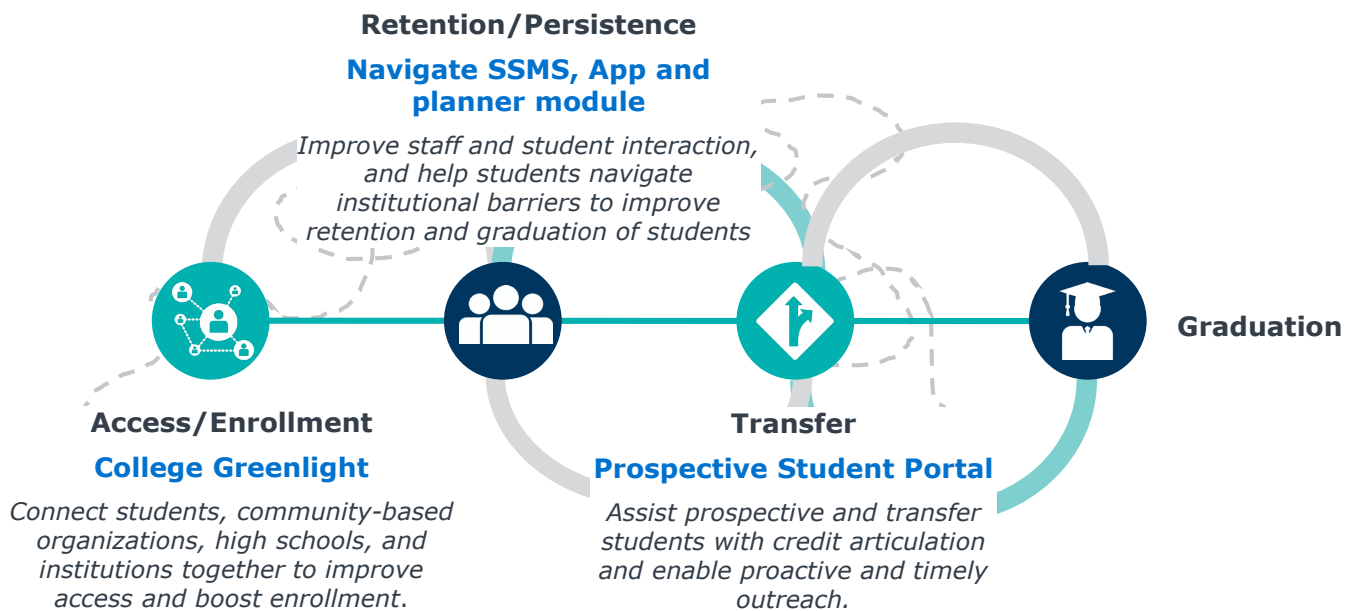


Moon Shot for Equity Technologies

The Advantage of a Common Tech Infrastructure

- Eliminate needless student swirl between and within institutions
- Common technology experience for students across institutions
- Common data analytics capabilities to enable information and best practice sharing
- Shared implementation and utilization fosters collaboration for professional development

Ensure All Paths Lead to Success



Technology Implementation Timeline

	Description	Status	Timeline
Navigate: Student Success Management System	Communication tool, manage appointments and campaigns, coordinate with other staff (e.g. progress reports), integrated analytics and standardized reports	LIVE	UWP COMPLETE
Navigate: Student App	View schedule, schedule appointments, view holds, arrange study buddies, find resources and important dates	LIVE	UWP COMPLETE
Navigate: Academic Planner	Interactive degree maps, interactive schedule planning and registration tool	IN PROCESS	UWP COMPLETE Fall 21
Navigate: Prospective Student Portal	New and transfer students can view equivalencies and create degree plans	TBD	TBD
College Greenlight	College and scholarship search tool for students, counselors and community organizations	IN PROCESS	UWP COMPLETE Fall 21



Stay Connected!

Logging in to EAB.com

Create an account to register for live and on-demand virtual engagement opportunities, best practice student success research and the latest from EAB!

Step 1

Go to our website, www.eab.com.

Step 2

On the top right of the homepage, click the "Log In" button, then select "Create an Account".

Step 3

On the registration page, you will be prompted to enter your institutional email (e.g., your .edu email address), your institution's country, city, state, and zip code. Once you've input this information, select your institution from the organization drop down list and click on the button that says "Go to Step 2".

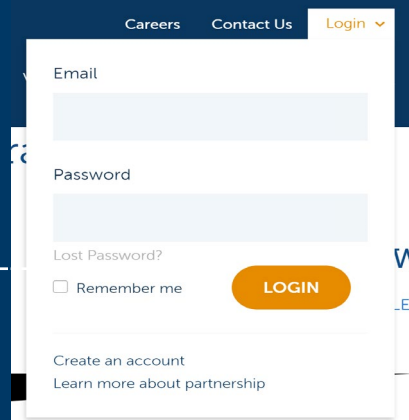
NOTE: If your institution does not appear in the drop-down list, send an email to eabhelp@eab.com for assistance.

Step 4

Check your .edu email inbox (including junk and/or spam folders) for an email from EAB.com to verify your email address and create a password for your account. If you haven't received an email after several minutes, email eabhelp@eab.com for assistance.

Step 5

Add Events@eab.com to your contacts (or ask your IT department) to make sure you receive all event registration confirmations and calendar holds.



Register

Step 1

Email *

Country *

State/Province *

City *

Zip Code

Your Organization *

If your organization does not appear in this list, please contact the EAB Help at eabhelp@eab.com.

[GO TO STEP 2](#)



For More Information about Moon Shot for Equity click [here](#).

Contact Your Respective Program Owner to Learn More

DeAnn Possehl
UW-Parkside

Possehl@uwp.edu

Phyllis King
UW-Milwaukee

pking@uwm.edu

Vicki Turner
UW-Milwaukee

turner@uwm.edu

Christine Manion
MATC

manionc@matc.edu

Abby Hanna
Carthage College

ahanna@carthage.edu

