

# THERE'S GOT TO BE A MORNING AFTER

[https://youtu.be/\\_KClpLzFftU](https://youtu.be/_KClpLzFftU)

*There's got to be a morning after  
If we can hold on through the night  
We have a chance to find the sunshine  
Let's keep on looking for the light  
Oh, can't you see the morning after?  
It's waiting right outside the storm  
Why don't we cross the bridge together  
And find a place that's safe and warm?  
It's not too late, we should be giving  
Only with love can we climb  
It's not too late, not while we're living  
Let's put our hands out in time  
There's got to be a morning after  
We're moving closer to the shore  
I know we'll be there by tomorrow  
And we'll escape the darkness  
We won't be searching anymore*



# THE MORNING AFTER MAY NOT BE TODAY

*Can you feel it  
Now that spring has come  
And it's time to live in the  
Scattered sun*

From Waiting for the Sun,  
The Doors

<https://youtu.be/W1WnrjciO8c>

# ELECTION RESULTS

## WHAT WE KNOW

*The National Election Map*

Joe Biden

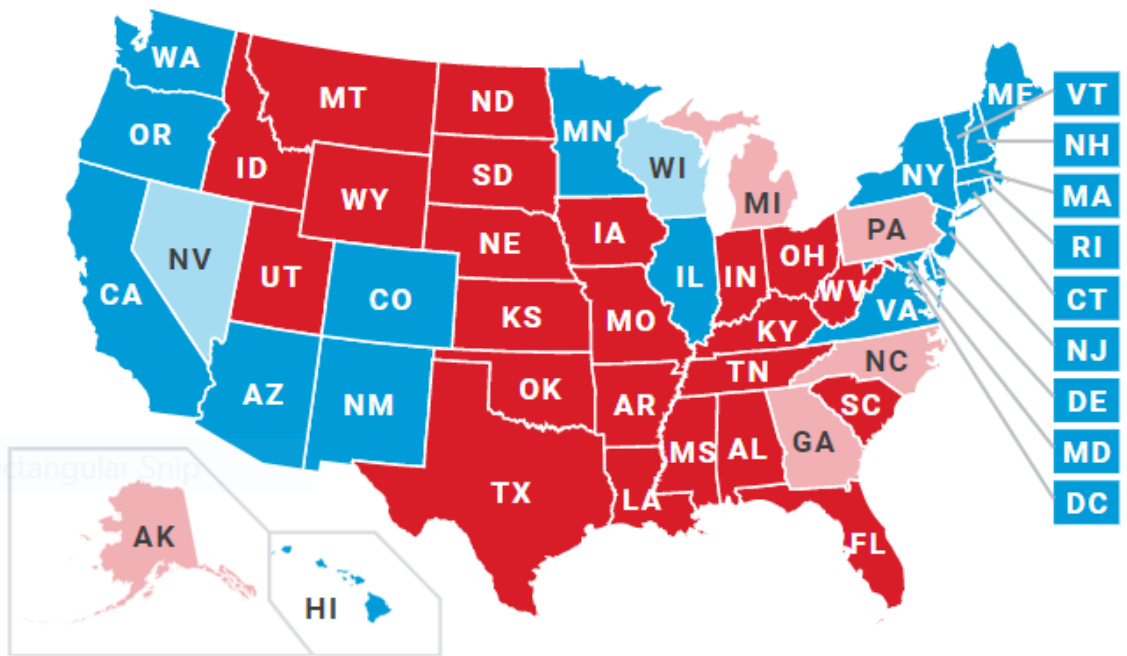


238

270 to win

Donald Trump

213



# ELECTION RESULTS

## WHAT WE KNOW

As of 11:28 am

*The National Election Map*

### Swing states

From [The Associated Press](#)



Biden



Trump



#### Georgia

16 electoral votes · 94% reporting

48.3%  
2,283,070

50.5%  
2,383,414



#### Michigan

16 electoral votes · 96% reporting

49.5%  
2,582,381

49%  
2,553,915



#### Nevada

6 electoral votes · 67% reporting

49.2%  
588,252

48.6%  
580,605



#### North Carolina

15 electoral votes · 94% reporting

48.7%  
2,655,392

50.1%  
2,732,104



#### Pennsylvania

20 electoral votes · 64% reporting

45.3%  
2,585,255

53.5%  
3,056,879



#### Wisconsin

10 electoral votes · 95% reporting

49.6%  
1,630,396

48.9%  
1,609,879



#### Arizona

11 electoral votes · 84% reporting

51%  
1,410,977

47.6%  
1,317,468



THIS WEBSITE WANTS TO  
KNOW YOUR LOCATION.

DENY

ALLOW



# ELECTION RESULTS

## WHAT WE KNOW

*The National Election Map*

*Congress*

House of Representatives  
218 to control

Democrat

Republican

193

185

Senate  
51 to control

Democrat

Republican

45

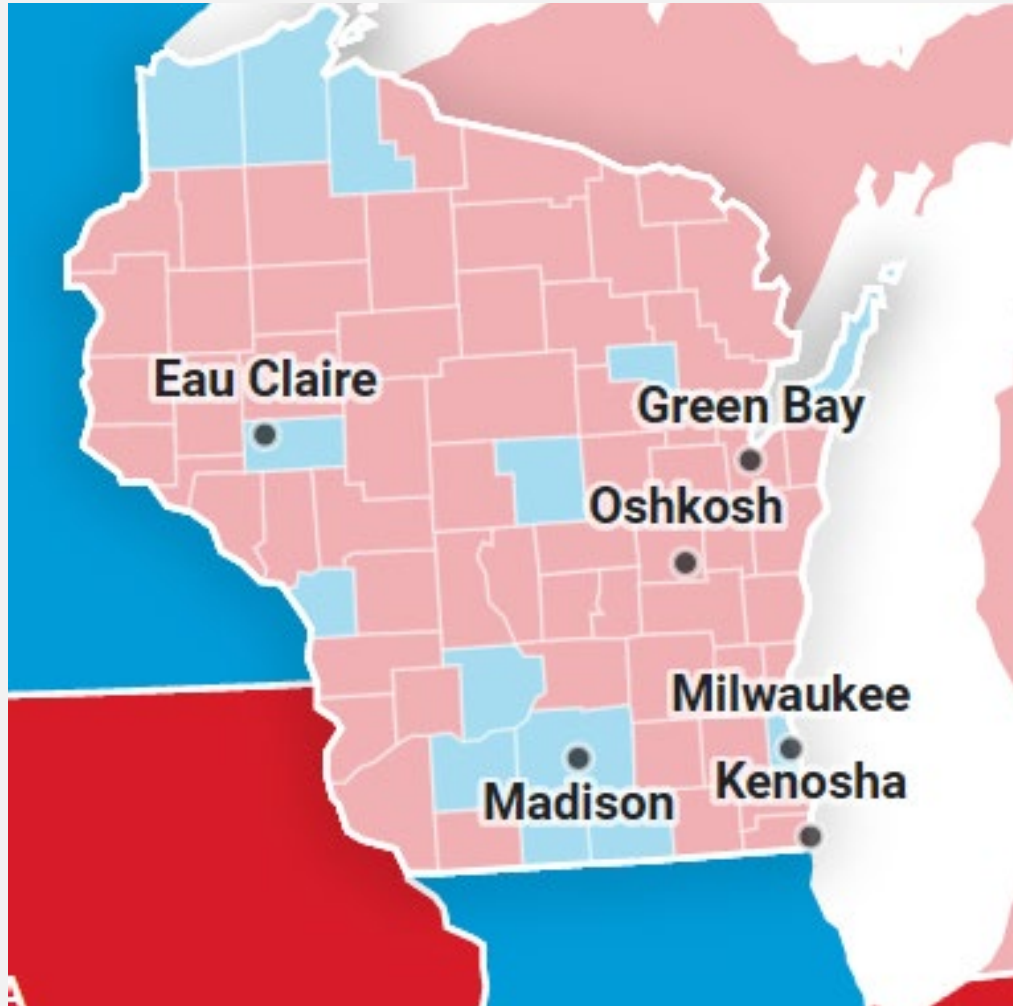
47

THIS WEBSITE WANTS TO  
KNOW YOUR LOCATION.

DENY **ALLOW**



# ELECTION RESULTS



## WHAT WE KNOW

*The Wisconsin Election Map*

Joe Biden  
Democratic Party  
49.5%  
1,630,337

Donald Trump  
Republican Party  
48.8%  
1,609,640

State Legislature remains  
largely unchanged

THIS WEBSITE WANTS TO  
KNOW YOUR LOCATION.

DENY ALLOW



- Total Early Votes: **100,611,070**
  - In-Person Votes: **35,901,138**
  - Mail Ballots Returned: **64,709,932**
  - Mail Ballots Outstanding: **27,364,521**
  - Nationally, 2020 early voters cast **73%** of the total votes counted in the 2016 general election ( **60%** of VEP turned out in 2016)
- 
- Turnout in 2020: **65%**

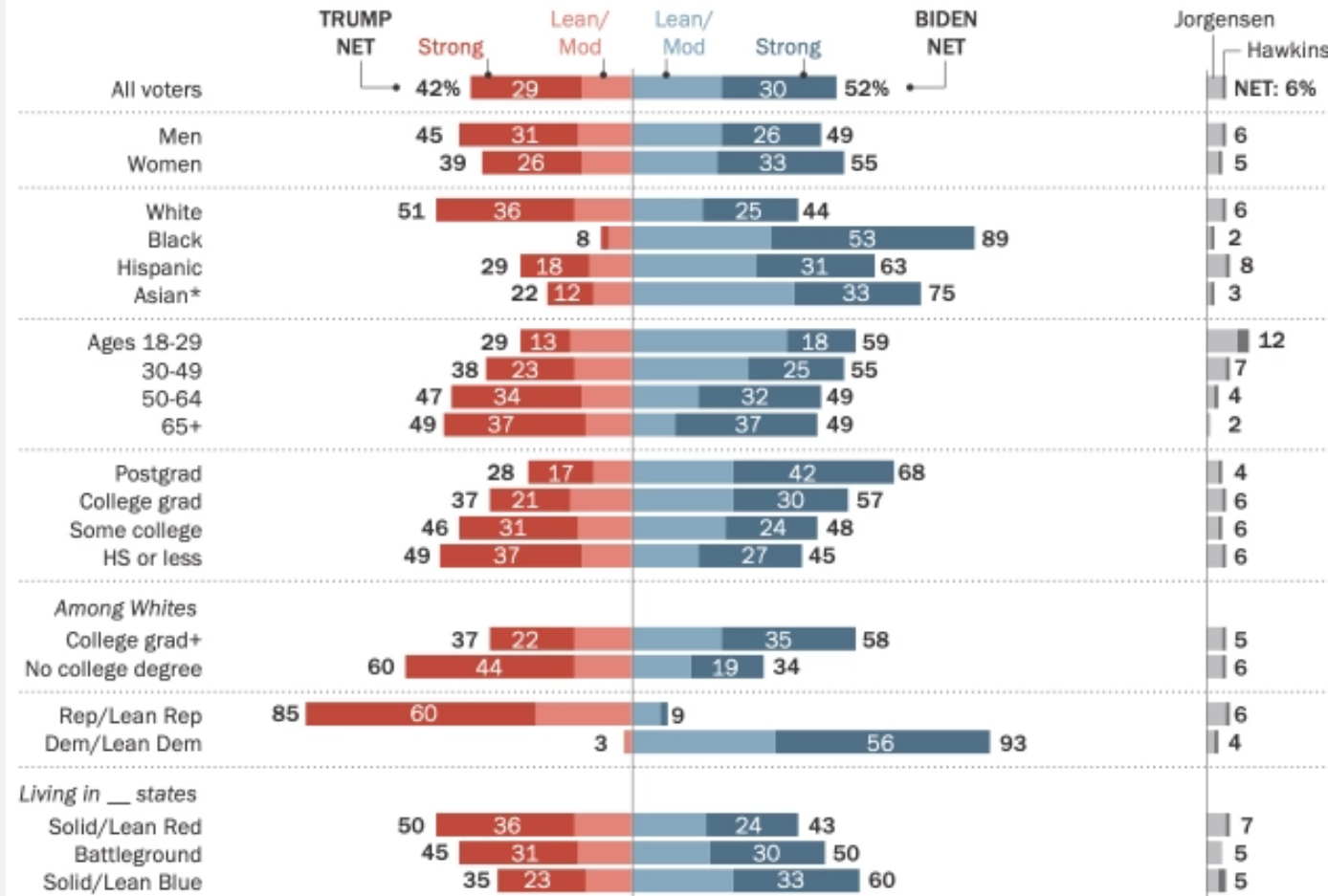


# WHAT WE DON'T KNOW

WHO VOTED ? HOW DID THEY VOTE?

## Trump leads among White voters, trails by wide margins among Black, Hispanic and Asian voters

% of registered voters who would vote for \_\_ if the 2020 presidential election were being held today



THIS WEBSITE WANTS TO  
KNOW YOUR MOMENTUM.

**DENY** **ALLOW**



# ELECTION NIGHT V ELECTION WEEK

RED MIRAGE turns to “blue shift” with full VBM count and resolution of any VBM ballot challenges



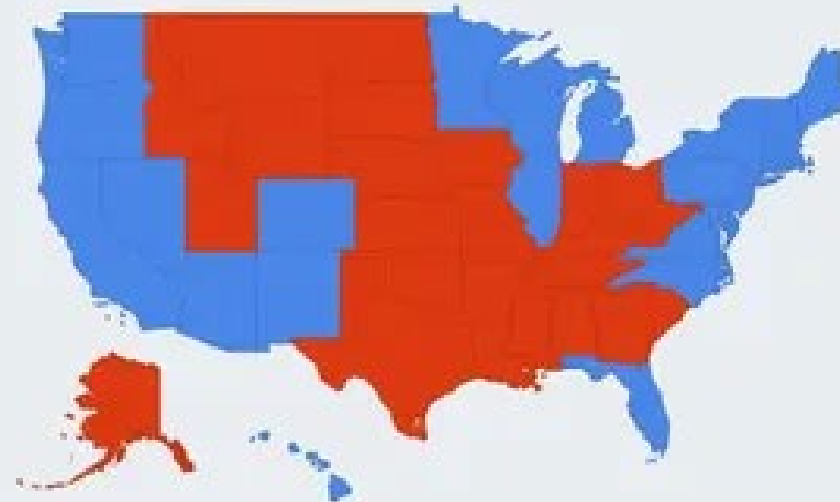
**Election Night** (Assuming 15% of VBM Votes Counted)

**Final Results**



Electoral Votes	130	408
-----------------	-----	-----

Popular Vote	43%	57%
--------------	-----	-----



Electoral Votes	334	204
-----------------	-----	-----

Popular Vote	54%	46%
--------------	-----	-----



# LET'S REFLECT:

*Imagine there's no heaven  
It's easy if you try  
No hell below us  
Above us only sky  
Imagine all the people living for today*

From Imagine, John Lennon

<https://www.youtube.com/watch?v=L6svOHFSAH8>

# CUMULATIVE EXTREMISM DESTROYS DEMOCRACY

*Americans on both the left and the right now view their political opponents not as fellow Americans with differing views, but as enemies to be vanquished. And they have come to view the Constitution not as an aspirational statement of shared principles and a bulwark against tribalism, but as a cudgel with which to attack those enemies. [The Atlantic](#)*

Cognitive Simplicity

Intolerance

Overconfidence



## GOING TO EXTREMES

HOW LIKE MINDS UNITE AND DIVIDE

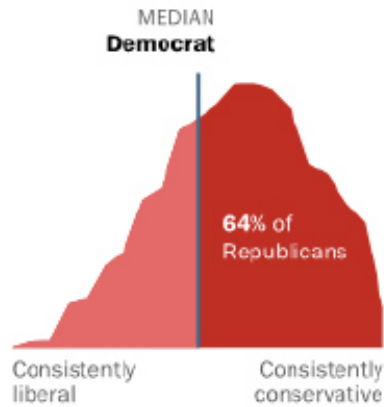


*Cass R. Sunstein*

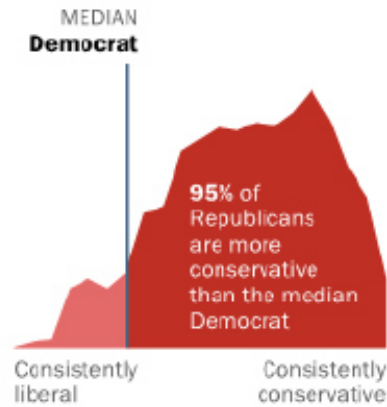
## Less overlap in the political values of Republicans and Democrats than in the past

*Distribution of Republicans and Democrats on a 10-item scale of political values*

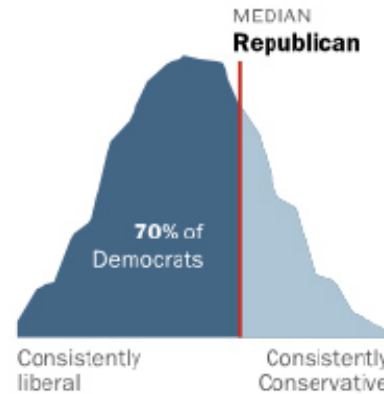
**1994**



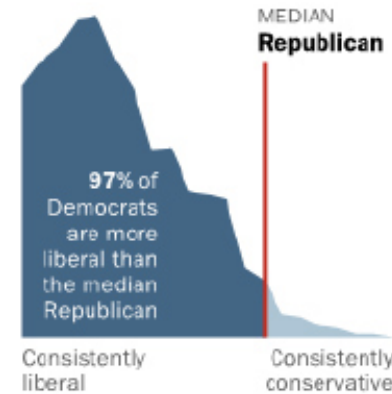
**2017**



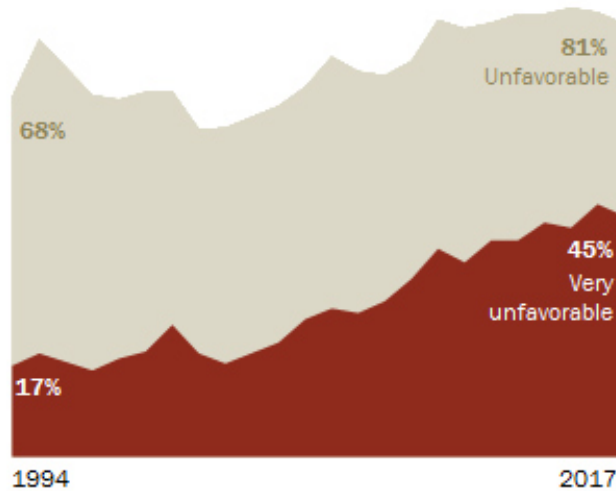
**1994**



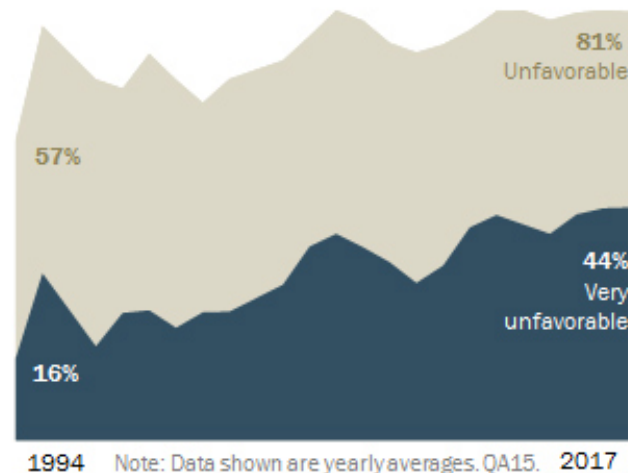
**2017**



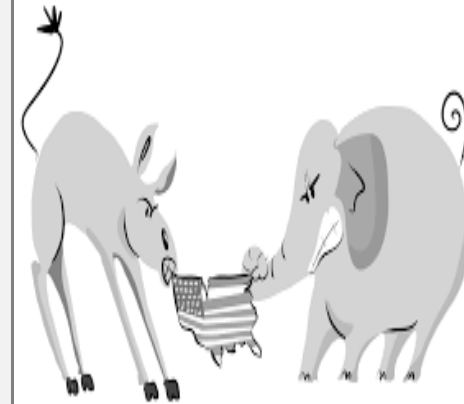
*% of Republicans and Republican leaners who have a \_\_\_\_\_ opinion of the Democratic Party*



*% of Democrats and Democratic leaners who have a \_\_\_\_\_ opinion of the Republican Party*

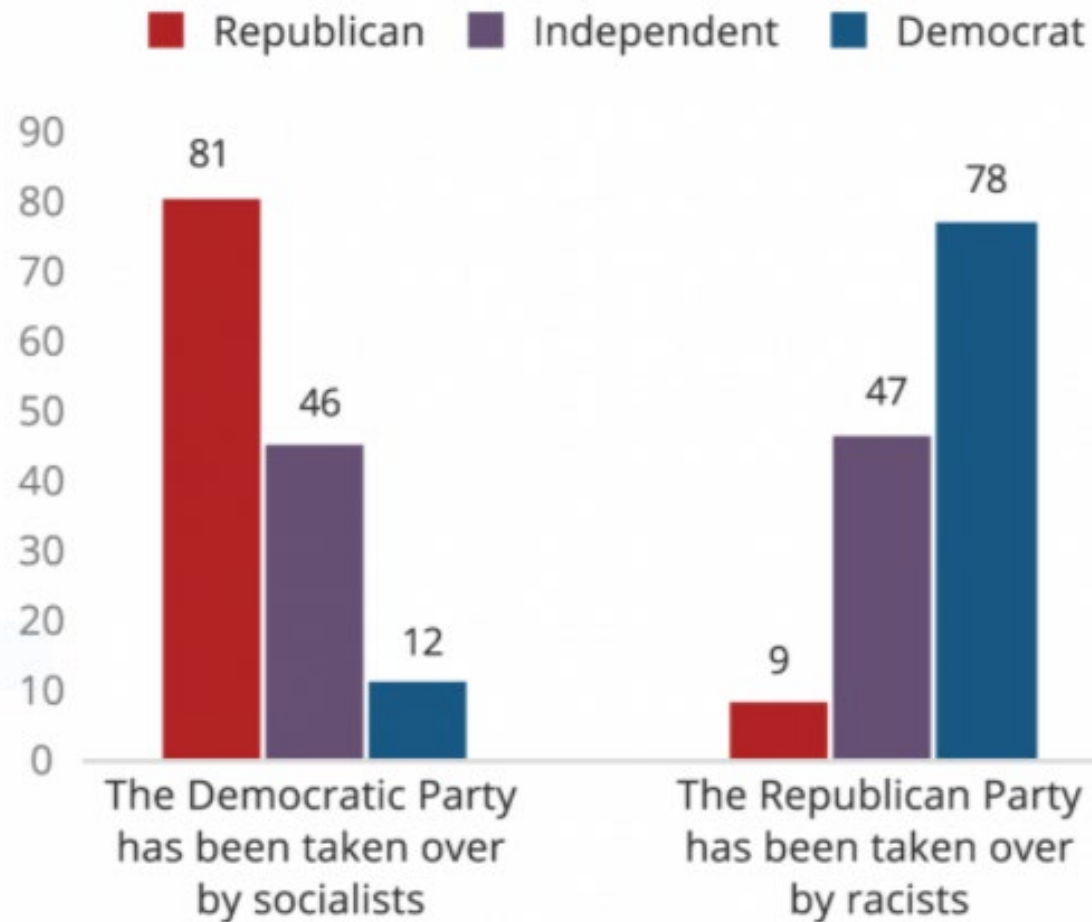


Note: Data shown are yearly averages. QA15. 2017  
Source: Survey conducted June 8-18, 2017.

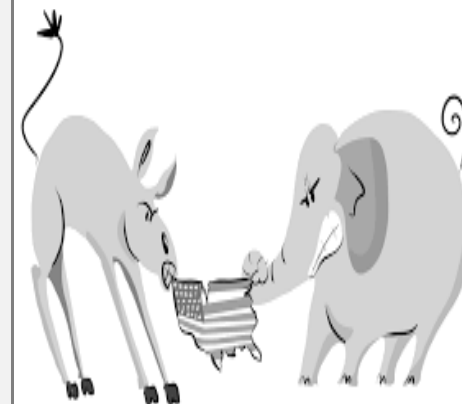


## FIGURE 1.4 Negative Perceptions of Political Parties, by Party Affiliation

Percent who say:

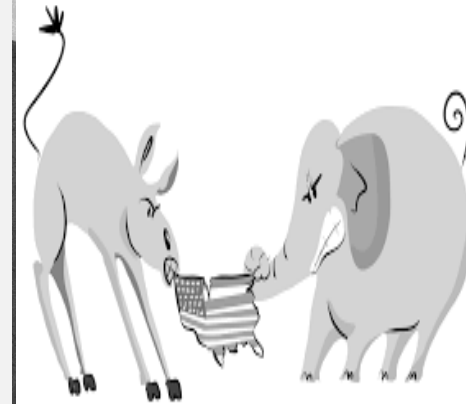


Source: PRRI 2020 American Values Survey.



## AN EXERCISE IN HUMILITY FROM BRAVER ANGELS

1. How often do I find myself thinking about “those people” on the other political side without much regard for the variation among them?
2. How often do I find myself assigning mainly self-serving or negative motives to the other group—and mainly positive motives to my group?
3. How often do I find myself focusing on the most extreme or outrageous ideas and people on the other side, thereby making it hard to see how a reasonable person could remain in that group?
4. How often do I find myself comparing the worst people on the other side with the best people on my side?
5. How often do I feel a “rush” of pleasure with friends when we ridicule those crazies on the other political side?
6. Which of the following is closest to my overall or most common emotional attitude towards the majority of people who support the other side? Circle the one closest to where you are now and then the one you aspire to, if they are different.
  - Hate. They are enemies out to destroy the country.
  - Disdain. They are ignorant and should know better.
  - Pity. They are well meaning but duped.
  - Basic respect. They make contributions even if they are mostly off base.
  - Respect and appreciation. They make unique and necessary contributions.





# ELECTIONS

*I'm your top prime cut of  
meat, I'm your choice  
I wanna be elected  
I'm your Yankee doodle dandy  
in a gold Rolls Royce  
I wanna be elected*

From Elected, Alice Cooper

<https://www.youtube.com/watch?v=LiQW1TIDZMU>

# ELECTORAL FUNDAMENTALISM

*..while elections certainly exist and can change governments, public electoral debate is a tightly controlled spectacle, managed by rival teams of professionals expert in the techniques of persuasion, and considering a small range of issues selected by those teams. The mass of citizens plays a passive, quiescent part, responding only to the signals given them (Colin Crouch, 2004)*

**Isn't it bizarre that voting**, our highest civic duty, boils down to an individual action performed in the silence of the voting booth?

Is this really the place where we turn individual gut feelings into shared priorities?

Is it really where the common good and the long term are best served?

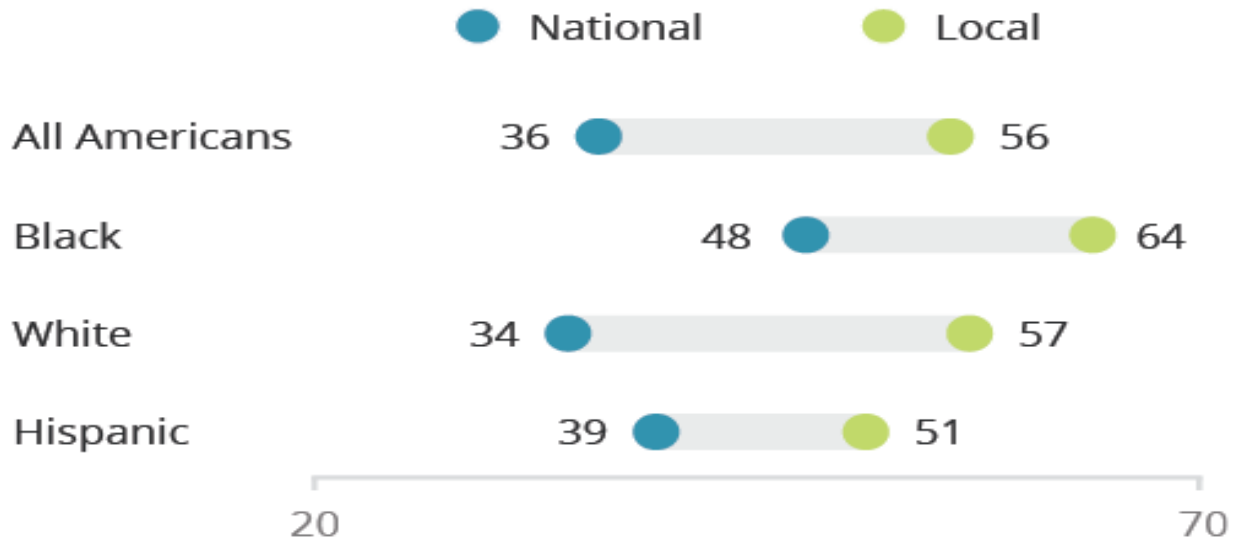
(Van Reybrouck, 2016)



# IS EVERYTHING LOCAL?

**FIGURE 2. Americans More Optimistic About Solving Problems Locally**

Percent who are optimistic that people who hold different political views can still come together and solve \_\_\_\_\_ problems.



Source: PRRI/The Atlantic 2018 Civic Engagement Survey.

# EXPECTATIONS

*I'd better quit my talking, 'cause I told you  
all I know,*

*But please remember, pardner, wherever  
you may go,*

*The people are building a peaceful world,  
and when the job is done*

*That'll be the biggest thing that man has  
ever done.*

From The Biggest thing that man has ever  
done by Woody Guthrie

<https://www.youtube.com/watch?v=qB-YnV0e3Lc>

# WE MAY OVERESTIMATE THE POWER OF THE PRESIDENCY

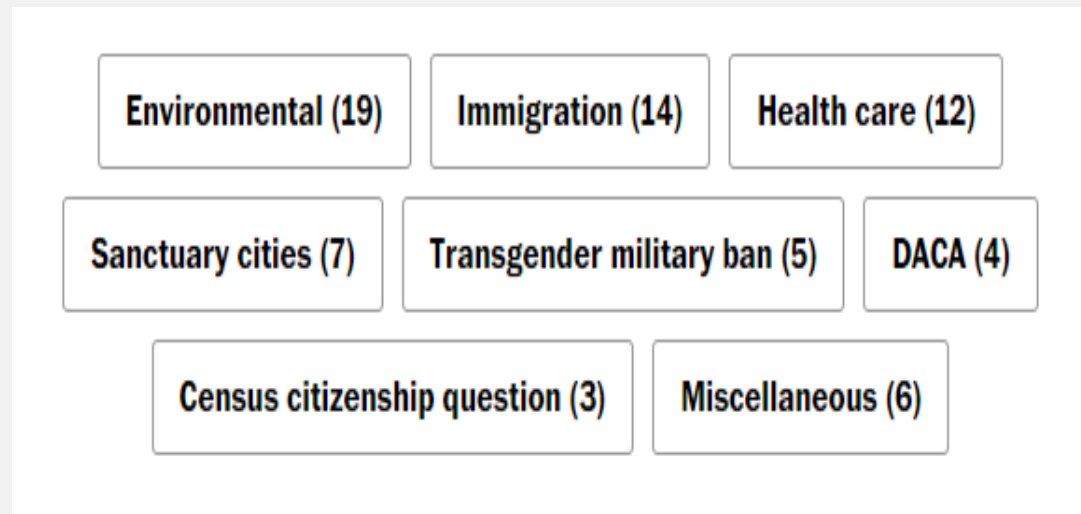
*Is an imperial presidency only due to norms, rather than rules, procedures, and the constitution?.*

We have not yet found a way to separate the office of *symbolizing the life of the nation* from the office of *exercising executive power*. The confounding of these two offices was, in the beginning, a major source of presidential power. ([Novak, 1974](#))



# WE MAY OVERESTIMATE THE POWER OF THE PRESIDENCY

*President Trump has issued Donald Trump issued 193 executive orders between 2017 and 2020; as of 2019, 63 had been challenged in the federal courts*



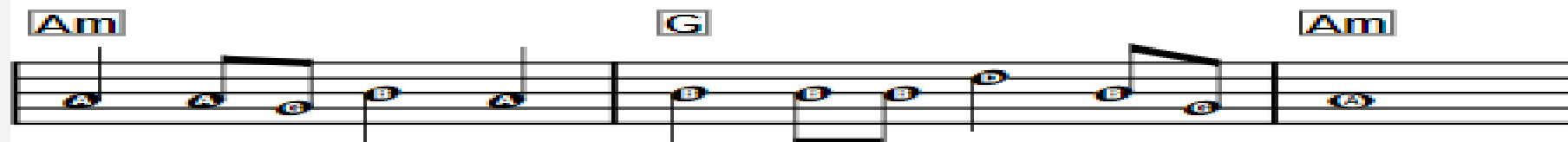
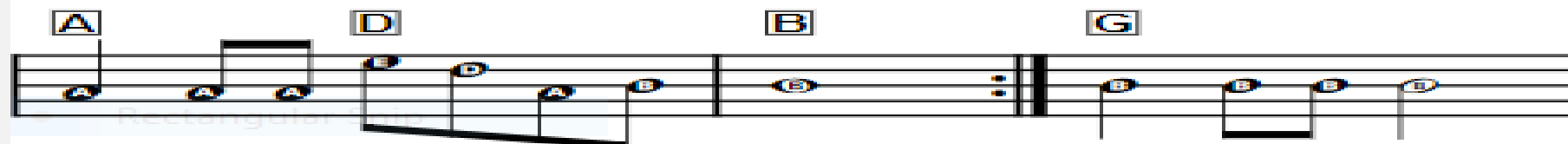
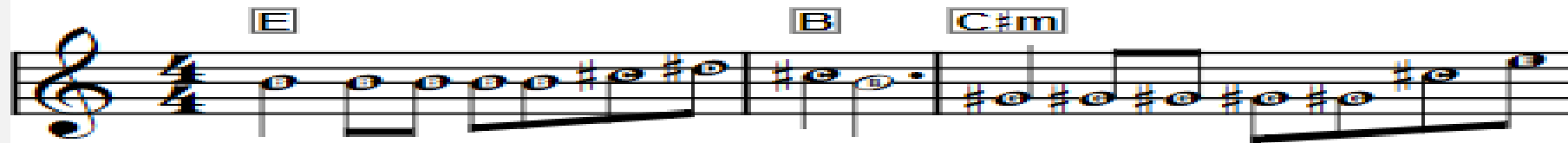
Words and Music by  
John Stump  
*Arranged by Acciden*

If there are no Violets, go to N.

[illegible]

# The Morning After

Words and Music by  
Al Kasha and Joel Hirschhorn



Dear America:

Emotional Support Canadians are on standby. If you have not yet received your Emotional Support Canadian, one will be assigned to you shortly. 🇨🇦

