

UNIVERSITY OF WISCONSIN-PARKSIDE THEATRE ARTS DEPARTMENT PRESENTS

SHAKESPEARE

LOVE'S LABOUR'S LOST

THEATRE

UNIVERSITY OF
WISCONSIN **PARKSIDE**

@TheRita

UWP.EDU/THERITA

Parkside PROMISE

TUITION FREE PROGRAM

If you are graduating from high school spring 2020 or later,
Learn more at uwp.edu/promise

CREATIVITY, LIKE ALL LIVING THINGS, NEEDS
AN ENVIRONMENT TO EXPAND AND EVOLVE.

THE KENOSHA CREATIVE SPACE
IS THAT ENVIRONMENT.



Kenosha Creative Space, Inc.
624-57th Street
Downtown Kenosha
KenoshaCreativeSpace.com

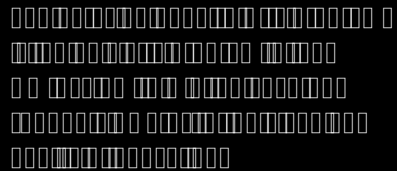

KENOSHA
CREATIVE
SPACE

CAST BIOS

LYRIC SIMONSON (*Rosaline*) is in her final year at Parkside. Previous credits include *Almost, Maine* (various roles U/S), *A Streetcar Named Desire* (Stella), *Angels in America* (The Angel), *Midnight and Moll Flanders* (Ensemble), and *Urinetown* (Mrs. Millenium) at Parkside. She performed in *Midsummer Night's Dream* with The Shakespeare Project of Chicago. She earned her certificate of classical acting from the London Academy of Music and Dramatic Art and is a certified actor combatant from the Society of American Fight Directors.

CODY SUMMERS (*Dom Armado*) is a senior at Parkside. His work includes *Don Juan* (Pierrot), *One Man, Two Guvnors* (Charlie "The Duck"), and *Urinetown* (Mr. Cladwell). Cody transferred from College of Lake County where he played in *The Tempest* (Ariel) and *The Miser* (Cleante). He can also be seen dancing it up in various shows at Six Flags Great America.

CHALENA WILLIAMS (*Jaquenetta*) is in her first year at Parkside. She is majoring in Theatre, with a concentration in Acting. Her previous acting credits are Chicago Shakespeare Slam (Hermia), *Nobody Famous* (Heather), *Witches v Princesses* (Witchy). In the summer, she was a part of a film crew for the television pilot, *Dearly Departed*. This past spring, she was also a part of the film crew for Believe Chicago Documentary.



Learn more about the award-winning Parkside Theatre Arts program.
uwp.edu/programs

PRODUCTION TEAM BIOS



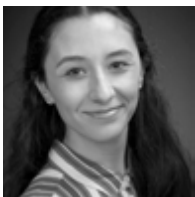
MISTI BRADFORD (*Costume, Hair, and Makeup Faculty Advisor, Stage Management Faculty Advisor*) is an associate professor of costume design, member of USAA Local 829, and Theatre Arts Department chair. She teaches costume design, makeup, wig/hair design, crafts and properties, and principles of theatrical design, and she mentors stage management students. Misti also serves as Co-Chair of design, technology, and management and the play selection committee for the Kennedy Center American College Theatre Festival, Region 3. Her most recent professional design and crafts artisan credits include, American Players Theatre, Milwaukee Repertory Theatre, Door Shakespeare, Children's Theatre of Madison, First Stage Children's Theatre, Milwaukee Chamber Theatre, Utah Festival Opera and Musical Theatre in Logan, Utah; PCPA Theaterfest in Santa Maria, CA; Michigan Shakespeare Festival. Parkside, selected designs include costumes for *Macbeth*, *Government Inspector*, *Hamlet*, *Twelfth Night* (KCACTF Certificate of Merit), and *Three Penny Opera*.



JACOB BRAY (*Lighting and Sound Faculty Advisor*) has designed lighting regionally for theatre, dance, opera, and television. You may have seen his work previously at Parkside on shows including lighting design for *Melancholy Play*, *The Taming of the Shrew*, *A Midsummer Night's Dream*, *Macbeth*, *Urinetown*, and sound design for *Eurydice*. Other credits include resident lighting designer at PCPA Theaterfest, the world premiere opera *Sundance*, and the Chicago premieres of *Stadium Devildare* and *Adrift*. He teaches in the areas of lighting design and projection design.



BRYAN BYARS (*Technical Director*) is in his third year as a theatre arts major with a concentration in design & technology. He spent the summer as staff carpenter at Colorado Shakespeare Festival and works as a Rita operations assistant. Recent work includes technical direction (*A Streetcar Named Desire*, *A Funny Thing Happened on the Way to the Forum*, *Angels in America*), master electrician (*Macbeth*), assistant lighting design (*Eurydice*), and lighting design (Spring Parkside Range Concert). Professional credits include production assistant at American Players Theater and electrics load-in at The Fireside.



MARIA CERVANTES (*Master Electrician*) is an international student who recently transferred from the College of Lake County in Illinois. Previous credits involve *Play On!: Self-Torture and Strenuous Exercise* (Adele), *Street Scene* (various roles), and *Cabaret* (assistant stage manager). As a CLC scene shop employee, she also worked on building the sets for *Jekyll & Hyde*, *Street Scene*, *A Midsummer's Night Dream*, and *Cabaret*.



DARICE DAMATA-GEIGER (*Costume Lab Supervisor*) is the costume lab supervisor and a lecturer teaching *Costumecraft* at Parkside. She brings to UW-Parkside over 45 years of professional and educational experience as a costume designer, lab supervisor, and instructor. Darice earned her MFA in Theatre Design at Wayne State University in Detroit, MI, as a Hilberly Fellow. Darice has extensive professional costume design experience and has designed for multiple Chicago theatres including City Lit, Famous Door Theatre, and The Next Theatre. The last two summer seasons she designed costumes for the Michigan Shakespeare Festival.

PRODUCTION TEAM BIOS



MOISÉS DIAZ (*Dramaturg*) is a senior theatre arts major with a concentration in directing and costume design. Credits at Parkside include *Angels in America* and *Don Juan* (wardrobe crew), *Eurydice* (wardrobe crew head) *One Man, Two Guvnors* (dramaturg, bassist), and *Midnight and Moll Flanders* (assistant costume designer). He has directed *Los Vendidos* and costume designed *The Diviners*, both at the College of Lake County. Moisés spent his summer as a General Production Intern at Hope Summer Repertory Theatre in Holland, MI.



SAMANTHA FEILER (*Stage Manager*) is a junior at Parkside and is in her second year as a theatre arts major with a concentration in acting and also enjoys stage management. Past acting credits at Parkside include *A Funny Thing Happened on the Way to the Forum* (Panacea) and *Midnight and Moll Flanders* (female swing, U/S). Other credits include *The Little Mermaid* (Ariel), *Into the Woods* (The Baker's Wife), and *Legally Blonde* (Paulette). Stage management credits include The Young Playwrights Festival with Milwaukee Chamber Theatre, Br!nk Br!efs Festival with Renaissance Theaterworks, and *The War of the Worlds* at Parkside.



TIANNA FIELD (*Scenic Charge Artist*) is in her fifth year at Parkside and is thrilled to be back in the Theatre Arts Department. She is in the design and technology concentration with a focus in scenic painting and costume design, and she has a newfound passion for lighting. When she isn't covered in paint, she's covering newsworthy events as a Public Affairs Broadcaster as part of the 112th MPAD in the Wisconsin Army National Guard. Tianna's professional charge artist credits include *Seussical*, *Mary Poppins*, and *Seven Brides for Seven Brothers*, among others. Tianna is thrilled to be taking a break from theatre this summer to focus on her military career and attend a photojournalism course in Fort Meade, MD.



SAMUEL FITZWATER-BUTCHART (*Sound Designer*) Born and raised in Milwaukee, Sam has been involved in theatre for ten years and has worked for theater companies such as Skylight Music Theatre, Next-Act Theatre, Theatre Gigante, Electric Crayon Studios, Fresh Page Productions, Three Crows Theater, and Open Door Theatre. He is currently the audio engineer for the University's flagship ensemble: Parkside Range. You can find out what Sam is currently up to at SFBaudio.com.

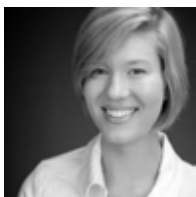


BRIAN GILL (*Director*) is an assistant professor of performance at Parkside. Professional stage credits include Milwaukee Chamber Theatre, Milwaukee Shakespeare, Renaissance Theaterworks, First Stage, and Milwaukee Rep., Goodman Theatre, Chicago Shakespeare, Victory Gardens, Drury Lane Oakbrook and Remy Bumpgo; Regionally Brian has performed at Theatre at the Center, the Illinois and Texas Shakespeare Festivals, Allenberry Playhouse and Ford's Theatre. Brian trained at Shakespeare's Globe in London. Parkside directing credits include *Book of Days*, *Hedda Gabler*, *A Streetcar Named Desire*, *Don Juan*, and *Midnight and Moll Flanders*. He is a proud member of Actor's Equity Association and an Actor-Combatant with the Society of American Fight Directors.

PRODUCTION TEAM BIOS



ALEX HAMILTON (*Scenic Designer*) is a fourth year transfer student with a theatre arts major and an emphasis in design and technology. He was recently the projections designer for *The War of the Worlds*. Alex is training to become a scenic designer and technical director. This past summer Alex worked as a carpenter for Hope Summer Repertory Theatre in Holland, Michigan.



SARAH HEMKEN (*Wardrobe Supervisor*) is in her fourth year at Parkside and is a theater arts major with a concentration in design and technology. She has a passion for costuming and has been on wardrobe crew for *One Man, Two Guvnors*, *Eurydice*, *War of the Worlds*, and *Midnight and Moll Flanders*. She was the assistant costumer designer for *Urinetown*. She also works in the costume shop and helps with building and alterations for each show. Her future plans include working for Utah Festival Opera this summer as a stitching intern in their costume shop.



BAILEY JOHNSTON (*Assistant Stage Manager*) is a senior at Parkside. Previous acting credits include *One Man, Two Guvnors* (Christine Patterson) and *Urinetown* (Billy Boy Bill) at Parkside and *Blithe Spirit* (Edith) at the Racine Theater Guild. She is majoring in psychology and newly in theatre and is thrilled to finally be in the department full time!



ALEXA JOY (*Makeup Designer*) is a senior majoring in theatre arts with a visual arts minor. She has served as a scenic artist on many shows, was the charge artist for *Macbeth*, *Angels in America*, and *Eurydice*, and was the makeup and hair designer for *One Man, Two Guvnors*. Alexa had the opportunity to work as a scenic artist at Muhlenberg Summer Music Theatre in Allentown, PA, in 2017 and as a scenic artist and assistant charge artist at Pacific Conservatory of the Performing Arts (PCPA) in Santa Maria, CA, this past summer. She is excited to continue her education at Parkside in the theatre arts.



BEZZA LEGREVE (*Assistant Director*) is graduating this spring with a double major in theatre arts and liberal studies with a concentration in gender studies. Her previous designs at Parkside include hair and makeup design for *A Streetcar Named Desire* and *Angels in America: Millennium Approaches*.



MARANDA RILEY (*Assistant Stage Manager*) is a transfer student from College of Lake County majoring in theater arts with a focus in stage management. She recently assistant stage managed *Midnight and Moll Flanders*. Previous experience at CLC includes stage managing *A Midsummer Night's Dream*, *Street Scene*, *Everyman*, and assistant stage managing *The Cherry Orchard*.

PRODUCTION TEAM BIOS



JODY SEKAS (*Scenery, Technical Direction, Properties, Paints Faculty Advisor*) is an associate professor of scenic design & technology in the Theatre Arts Department and a core professor in the Digital Design & Fabrication Certificate program. Prior, he taught Scenography in the Theatre, Film, & Dance department at Humboldt State University in northern California; Scenic/ Lighting Design & Technology at UW-Eau Claire, and was the resident scenic & lighting designer for the Sioux Falls Playhouse in South Dakota. He has also worked as a freelance designer and technician for such venues as The Oregon Shakespeare Festival, the Milwaukee Chamber Theatre, Dell'Arte International, Door Shakespeare, Omaha Theatre Company for Young People, The Western Stage, Utah Shakespeare Festival, and on several independent films.



JORDAN STANEK (*Properties Master*) is in his senior year at Parkside focusing on props. Credits include *Macbeth* (assistant stage manager), *A Streetcar Named Desire* (prop master), *Don Juan* (assistant scenic designer), *Angels in America* (prop master), *One Man, Two Guvvners* (technical director), *Eurydice* (assistant stage manager), and *Midnight and Moll Flanders* (prop master). He worked as a prop intern in 2017 at PCPA - Pacific Conservatory Theatre in Santa Maria, CA, and in 2018 at The Public Theater in New York, NY.



LAUREN STONER (*Costume Designer*) is in her final year of undergrad. She started at Parkside in 2012, left for a few years and attended school in New Mexico, and returned this past academic year to continue the pursuit of her passion for theatre. Lauren loves any and all aspects of theatre, both technical and performance – but her current focus is in costume design and construction.



CHELSEA STREBE (*Lighting Designer*) is in her fourth year at Parkside. She was the technical director for *Midnight and Moll Flanders*, the projection designer for *Eurydice*, the master carpenter for *Angels in America*, and an assistant lighting designer for *One Man, Two Guvvners*. She has done internships with both American Players Theater and Utah Festival Opera and Musical Theater. Chelsea is also a shop assistant at Parkside.

SPECIAL THANKS

TITAN Theatre Company, Lenny Banovez, College of Lake County Theatre Department
Barbara Zahora, Shakespeare Project of Chicago, Nicolas Cicerale - Tremper High School
and Casa Capri for their ongoing support

PRODUCTION PERSONNEL

ASSISTANT STAGE MANAGERS	Bailey Johnston, Maranda Riley
STAGE MANAGEMENT FACULTY ADVISOR	Misti Bradford
SCENIC DESIGN/TECHNICAL DIRECTION FACULTY ADVISOR	Jody Sekas
MASTER CARPENTER	Zach Young
LIGHTING FACULTY ADVISOR	Jake Bray
MASTER ELECTRICIAN	Maria Cervantes
SOUND FACULTY ADVISOR	Jake Bray
PROPERTIES/PAINTS FACULTY ADVISOR	Jody Sekas
COSTUME/HAIR/MAKEUP FACULTY ADVISOR	Misti Bradford
HOUSE MANAGER	Christiane Laskowski
COSTUME SHOP SUPERVISOR	Darice Damata-Geiger
SCENIC LAB SUPERVISOR	Nate Stamper
SCENE SHOP FOREMAN	Steven Novak
LIGHT BOARD OPERATOR	Erin Dillon
SOUND BOARD OPERATOR	King Hang
DECK CREW	Jennifer Hinijosa
WARDROBE SUPERVISOR	Sarah Hemken
WARDROBE CREW	Ben Compton, Emmalee Berger, Ariana Gibeault, Olivia Springsteen
HAIR AND MAKEUP CREW	Hailey Schowalter, Joe Romanak, Taylor Stefanski
COSTUME SHOP ASSISTANTS	Moisés Diaz, Ariana Gibeault, Sarah Hemken Bri Humke, Alexa Joy, Lauren Stoner
SCENE SHOP ASSISTANTS	Jeff Brain, Maria Cervantes, Sam Fitzwater-Butchart, Noah Frye Dionisse Molina, Taylor Ramcke, Matthew Rangel Jack Purves, Chelsea Strebe
SCENIC PAINT CREW	Jenny Bauer, Tianna Fields, Jenna Kleinofen Bezza LeGreve, Kyle Aaron Racas
SCENIC CONSTRUCTION CREW	Garrett Allen, Maxwell Alexander, Nathan Bigna, Jeff Brain Bryan Byars, Cole Conrad, David Czuper, Mike Fischer Alex Hamilton, Jennifer Hinijosa, Dominick Knox, Shamoon Mian, Joe McHugh, Adam Mulheron Jennifer Nelson, Megan Poppa, Tomer Proctor-Zenker, Jack Purves, Matthew Rangel Sara Rojas, Joe Romanack, Arielle Santos, Sarah Severson, Sarah Sullivan, Hannah Tangen
PROPERTIES CREW	Austin Caracciolo, Christianne Laskowski, Leticia L'Huillier, Jordan Stanek
LIGHTING CREW	Jessica Baker, Jenny Bauer, Emmalee Berger, Ben Briselden Maria Cervantes, Tyler Coffey, Erin Dillon, Noah Frye, Sarah Hemken Talia Last, Taylor Ramcke, Cody Summers, Chelsea Strebe, Sarah Tait
COSTUME CONSTRUCTION CREW	Garrett Allen, Emily Bernhagen, Nathan Bigna Bryan Byars, Ben Compton, Sarah Dennis, Moisés Diaz Erin Dillon, Emma Foley, Hans Freisheim, Ariana Gibeault, Nadia Goldstar Alex Gray, Hailey Houtz, Bri Humke, Semetria Jackson, Emily Korecz Christiane Laskowski, Kurt Mlachnik, Hans Pfrang, Tomer Purves Tomer Proctor-Zenker, Hailey Schowalter, Lyric Simonson Olivia Springsteen, Lauren Stoner, Paul Weise, Chalena Williams
SOUND CREW	Samuel Fitzwater-Butchart, Emma Foley King Hang, Hans Pfrang, Kelsey Thomas
MARKETING / PROGRAM LAYOUT	Oliver Johnson
PROMOTIONS	Jennifer Sassaman
POSTER DESIGN	Kim Sekas
PRODUCTION PHOTOGRAPHER	Alyssa Nepper
DIRECTOR OF CRAFT SERVICES	Keith Harris
DEPARTMENT ADMINISTRATIVE ASSISTANTS	Jennie Filippone, Jared Holloway Joe Lambin, Karen Sorensen, Diane Tenuta

RACINE *rtg* GUILD
THEATRE

95 to
the musical

With original music by
Dolly Parton,
this musical will have
your toes tapping!

May 10 - 26, 2019

2519 Northwestern Ave.
Racine, WI 53404

RacineTheatre.org
262.633.4218

2019 / 2020 SEASON



SEASON TICKETS ON SALE!



BE A S.T.A.G.E. CLUB MEMBER!

Did you know that nearly 100% of our production costs are covered solely by ticket sales and donations?

University and College support provides funding for a portion of production costs, but primarily, we rely on the support of our patrons to cover the expenses for sets, costumes, music, lights, and royalties. We are hoping that you help to support our work and consider a donation to the UW-Parkside Theatre and become a member of our S.T.A.G.E. Club (Society of Theatrical Angels, Gallivants, and Enthusiasts).

To become a member of the S.T.A.G.E. Club, simply make a tax-deductible gift to the UW-Parkside Theatre Arts Department (c/o UW-Parkside Foundation) at one of the following levels:

- Golden Archangel (\$3,000 and above)
- Archangel (\$1,000-\$2,999)
- Golden Angel (\$500-\$999)
- Silver Angel (\$200-\$499)
- Gallivant (\$100-\$199)
- Enthusiast (\$35-\$99)

There are two funds to which you can direct your tax-deductible donation:

Theatre Production Enrichment Fund: Funds contributed here are used to help cover production costs and further enhance and produce high-quality productions at UW-Parkside. Your contribution will go directly toward funding various aspects of our season.

Theatre Arts Talent Scholarship Fund: Funds contributed here are awarded to our most deserving new and continuing theatre students each year based on academic and artistic achievement. This important scholarship fund helps us to reward our best talent and to attract and support exceptional theatre students.

Please consider donating.

Contact Misti Bradford: bradford@uwp.edu | 262-595-2967

S.T.A.G.E CLUB BENEVOLENT FUND

The UW-Parkside Theatre Arts Department wishes to thank the following individuals and businesses for their generous support.

Golden Archangel (\$3,000+)

The Fireside Theatre (Fort Atkinson)
Julie Anding & Lisa Kornetsky
Patricia Petretti

Archangels (\$1000-\$2,999)

Donald Cress	Maureen & Chris Potter
Harley Davidson Matching Gifts	Runzheimer International
Virginia & Tom Hartley	Shirley Warter
Mike & Lisa Humke	Pat Wegner

Golden Angels (\$500-\$999)

Tom & Kim Cooper
Ken and Peg Lukow

Silver Angels (\$200-\$499)

Florence Bohn
Laurie & Steve Feiler
David & Barbara Schneider
Jody & Kim Sekas

Theatre Gallivant (\$100-\$199)

Jacki Anderson	Julie Rae Friedman
Dave Buchanan	Mark & Courtney Marlair
James Didier	Sandy Moats
Ruth Frear	

Theatre Enthusiast (\$35-\$99)

Frances Bedford	Wren Ide
Bill & Amy Chapin	Frances Kavenik
Nola & James Gordon	Doris Nice

Thank you for being part of our work!



The Kennedy Center American College Theater Festival 49®, part of the Rubenstein Arts Access Program, is generously funded by David and Alice Rubenstein.

Special thanks to The Harold and Mimi Steinberg Charitable Trust for supporting the John F. Kennedy Center of the Performing Arts' Kennedy Center American College Theater Festival.

Additional support is provided by The Honorable Stuart Bernstein and Wilma E. Bernstein; the Blanche and Irving Laurie Foundation; the Dr. Gerald and Paula McNichols Foundation; Beatrice and Anthony Welters and the AnBryce Foundation.

Kennedy Center education and related artistic programming is made possible through the generosity of the National Committee for the Performing Arts and the President's Advisory Committee on the Arts.

This production is entered in the Kennedy Center American College Theater Festival (KCACTF). The aims of this national theater education program are to identify and promote quality in college-level theater production. To this end, each production entered is eligible for a response by a regional KCACTF representative, and selected students and faculty are invited to participate in KCACTF programs involving scholarships, internships, grants and awards for actors, directors, dramaturgs, playwrights, designers, stage managers and critics at both the regional and national levels.

Productions entered on the Participating level are eligible for invitation to the KCACTF regional festival and may also be considered for national awards recognizing outstanding achievement in production, design, direction and performance.

Last year more than 1,300 productions were entered in the KCACTF involving more than 200,000 students nationwide. By entering this production, our theater department is sharing in the KCACTF goals to recognize, reward, and celebrate the exemplary work produced in college and university theaters across the nation.



JESSICA BAKER

WINNER, NATIONAL LIGHTING DESIGN AWARD
The War of the Worlds



NOAH FRYE

RECIPIENT, STAGECRAFT INSTITUTE OF LAS VEGAS SCHOLARSHIP
RUNNER UP, NATIONAL LIGHTING DESIGN AWARD | *Midnight and Moll Flanders*
WINNER, SPIRIT AWARD | *Tech Olympics*

KENNEDY CENTER AMERICAN COLLEGE THEATER FESTIVAL SUCCESS

It was a fantastic week at KCACTF with 46 students attending the plays and workshops, 10 competing for the Irene Ryan Acting Scholarships, and 10 competing in design/technology categories.

In the National Lighting Design Award competition, both the winner (Baker) and runner up (Frye) are Parkside students. This is the third consecutive year that a Parkside student has advanced to Washington, D.C. to compete in this category.



BRI HUMKE

FINALIST, STAGE MANAGEMENT COMPETITION
Midnight and Moll Flanders



KYLE AARON RACAS

FINALIST, IRENE RYAN ACTING COMPETITION
Top 16 out of over 260 entries



LAUREN STONER

RUNNER UP, REGIONAL COSTUME DESIGN
The Trojan Women



TYLER COFFEY

WINNER, DESIGN STORM TEAM
Director of the Arcadia Team



MOISÉS DIAZ

TEN MINUTE PLAYWRITING COMPETITION DIRECTOR
Director of the winning series



BEZZA LeGREVE

TEN MINUTE PLAYWRITING COMPETITION DIRECTOR
Director of the winning series



TIANNA FIELD

WINNER, SPIRIT AWARD
Tech Olympics



LYRIC SIMONSON

PARTNER FINALIST, IRENE RYAN ACTING COMPETITION
Kyle Aaron Racas, Scene Partner

THEATRE

@TheRita

UNIVERSITY OF WISCONSIN-PARKSIDE

THEATRE ARTS

Be part of our company.

- ▶ Award-Winning Academic & Artistic Programming
- ▶ Ideal Location – Between Milwaukee & Chicago
- ▶ State-of-the-Art Facilities
- ▶ Company-Based Training
- ▶ Professional Connections
- ▶ Amazing Graduate Success

NEXT PROGRAM ENTRY AUDITION

May 10, 2019

Learn more and schedule yours:
uwp.edu/theatreaudition

Be at Parkside.

**SCHEDULE A CAMPUS VISIT OR
PROGRAM ENTRY AUDITION**
Contact Misti Bradford
bradford@uwp.edu

UNIVERSITY OF
WISCONSIN **PARKSIDE**